

NEOTEK™

We Deliver trust and integrity



Tools for
Construction
Plumbing
Wood Work
Automotive
Gardening

ISO
9001:2015
14001:2015
Certified
Company

CE
Certified

**PROFESSIONAL
HAND TOOLS**
CONSTRUCTION TOOLS

www.neotek.uk
www.neotekindia.com





NTI 1001

Top Cutter / Nipper

Drop Forged, With & Without Dip Insulation, Hardened & Tempered, Powder Coated, Sizes : 6", 7", 8"



NTI 1002

Carpenter / Clobber Pincer

Drop Forged, With & Without Dip Insulation, Hardened & Tempered, Powder Coated, Sizes : 6", 7", 8"



NTI 1003

Tower Pincer (CrV / Carbon Steel)

Drop Forged, With & Without Dip Insulation, Hardened & Tempered, Powder Coated, Sizes : 8", 9", 10", 11", 12"



NTI 1004

Water Pump Plier - Box Joint (CrV / Carbon Steel)

Drop Forged, With & Without Dip Insulation, Hardened & Tempered, Powder Coated, Sizes : 7", 10", 12", 16"



NTI 1005

Water Pump Plier - Groove Joint (CrV / Carbon Steel)

Drop Forged, With & Without Dip Insulation, Hardened & Tempered, Chrome Plated, Sizes : 10", 12"



NTI 1006

Stillson Pipe Wrench

Drop Forged, Induction Hardened Jaws, Powder Coated, Sizes : 8", 10", 12", 14", 18", 24", 36", 48"



NTI 1007

Pipe Wrench (Heavy Duty)

Malleable Cast Iron Handle, Induction Hardened Jaws, Powder Coated, Sizes : 8", 10", 12", 14", 18", 24", 36", 48"



NTI 1008

Adjustable Wrench

Drop Forged, Phosphate / Chrome Finish, Sizes : 8", 10", 12", 14", 18", 24"



NTI 1009

Strap Wrench

Aluminium Alloy with Nylon Strap,
Size : 300 mm



NTI 1011

Combination Spanner (CrV Steel)

Chrome Plated, Elliptical Type, Fully Mirror Polished / Satin /
Matt Finish, Press Panel, Sizes : Set of 6 / 8 / 11 / 12 14 / 25 /
26 Pcs. Jumbo Sizes 33, 34, 36, 38, 41, 42, 44, 46, 48, 50mm
Odd Sizes also available



NTI 1013

Scaffolding Bridge Spanner (CrV Steel)

Polished Heads, Chrome Plated
Size : 21 x 22 mm



NTI 1015

Gas Wrench

Carbon Steel, Matt Finish, Chrome Plated,
Sizes : 25 / 27 mm



NTI 1010

Double Open End Spanner (CrV Steel)

Chrome Plated, Elliptical Type, Fully Mirror Polished / Satin /
Matt Finish, Press Panel, Sizes : Set of 6 Pcs. (6 x 7 - 16 x 17)
Set of 8 Pcs. (6 x 7 - 20 x 22), Set of 12 Pcs. (6 x 7 - 30 x 32)
Odd Sizes also available



NTI 1012

Ring Spanner (CrV Steel)

Chrome Plated, Elliptical Type, Fully Mirror Polished / Satin /
Matt Finish, Press Panel, Sizes : Set of 6 Pcs. (6 x 7 - 16 x 17)
Set of 8 Pcs. (6 x 7 - 20 x 22), Set of 12 Pcs. (6 x 7 - 30 x 32)
Odd Sizes also available



NTI 1014

Tubular Box Spanner

With & Without Tommy Bar, Odd Sizes also available,
Galvanised Finish, Sizes : Set of 6 Pcs. (6 x 7 - 16 x 17)
Set of 8 Pcs. (6 x 7 - 20 x 22), Set of 12 Pcs. (6 x 7 - 30 x 32),
50 x 55 mm, 55 x 55 mm



NTI 1016

Cross Wheel Wrench

With & Without Reinforced Plate, Chrome Plated,
With & Without Dip Insulation,
Sizes : 14 mm x 14", 15 mm x 15", 16 mm x 16", 16 mm x 20"



NTI 1017

Two Way Wheel Spanner

With & Without Tommy Bar, Hardened & Tempered, Powder Coated / Chrome Plated, Sizes available as per requirement



NTI 1019

Brick Bolster / Chisel

With & Without Handguard, Hardened & Tempered, Powder Coated, Sizes : 50 / 60 / 70 / 80 mm



NTI 1021

Cold Chisel - With or Without Hand Protector Flat & Pointed (Hexa / Octa / Round)

With & Without Handguard, Hardened & Tempered, Powder Coated, Sizes : 16 x 200 / 250 / 300 / 350 / 400 mm, 18 x 250 / 300 / 350 / 400 mm



NTI 1023

Crow Bar (Hexa / Octa / Round)

Powder Coated, Sizes : 25 x 1000 / 1500 / 2000 mm, 28 x 1000 / 1500 / 2000 mm, 30 x 1500 / 1750 / 2000 mm



NTI 1018

Basin Wrench (Standard / Drop Forged)

Size : 20 x 22mm / 270 mm



NTI 1020

Rubber Hand Protector (for Brick Bolster / Chisel)

Rubber colour as per buyer's choice, Sizes : 14 / 16 / 18 / 20 mm



NTI 1022

Electrician Chisel - Flat & Pointed (Octagonal)

Hardened & Tempered, Powder Coated, Sizes : 10 x 200 / 250 / 300 / 350 mm



NTI 1024

Wrecking Bar - Swan Neck (Hexa / Octa / Round)

Hardened & Tempered, Powder Coated, Sizes : 16 x 500 / 600 / 700 / 800 mm, 18 x 600 / 700 / 800 mm, 20 x 800 / 1000 / 1200 / 1500 mm



NTI 1025

Iron Bar Bender - Two Heads (French Model)

Powder Coated / Chrome Plated, Sizes : 6 x 8 mm, 8 x 10 mm, 10 x 12 mm, 12 x 14 mm, 14 x 16 mm



NTI 1027

Iron Bar Bender Key - Single Head (European Model)

Forged Steel, Powder Coated, Sizes : 6, 8, 10, 12, 14, 16, 18, 20, 22 mm



NTI 1029

Bar Bender Plate (With Metal Ring)

Powder Coated, Sizes : 150 x 150 mm, 180 x 180 mm, 200 x 250 mm



NTI 1031

Stirrup Bender Plate

Powder Coated, Size : Max. 8 mm



NTI 1026

Iron Bar Bender Key - Single Head (Heavy)

Forged Steel, Powder Coated, Sizes : 6, 8, 10, 12, 14, 16, 18, 20, 22, 24, 26, 28, 30, 32, 36, 40 mm



NTI 1028

Iron Bar Bender Key (Double Head at one side)

Forged Steel, Powder Coated, Sizes : 6 x 8 mm, 8 x 10 mm, 10 x 12 mm, 12 x 14 mm, 14 x 16 mm, 18 x 20 mm



NTI 1030

Iron Bar Bender Plate (Heavy)

With Round Metal Handle, Powder Coated, Size : Max. 22 mm



NTI 1032

Bracket Bender

Powder Coated, Size : Max. 10 mm



NTI 1033

Mason Peg - With Knotched / Mushroom Head

Drop Forged, Press Spindle, Octa / Hexa / Round / Square Rod, Powder Coated, Sizes : 10 mm x 10", 10 mm x 12", 12 mm x 10", 12 mm x 12"



NTI 1035

Plumbob - Cylindrical

Brass Coated Big Ferrule, With Nylon Thread & Wooden Part, Powder Coated, Shrink Packed, Weight : 300, 400, 500, 750, 1000 gms.



NTI 1037

Plumbob - French Model

With Steel Part, With or Without Nylon Thread, Powder Coated, Weight : 400, 500, 600, 800, 1000 gms.



NTI 1039

Plumbob - Conical/Pyramid Type

Powder Coated with Plastic Head
Weight : 200 gms



NTI 1034

Plumbob - Conical

Brass Coated Ferrule, With Nylon Thread, Wooden Part, Metal Plate, Powder Coated, Double Blister, Wt. : 300, 400, 500 gms.



NTI 1036

Plumbob - Cylindrical

Brass Coated Ferrule, Metal Plate, With & Without Nylon Thread, Powder Coated, Weight : 100, 200, 300, 400, 500, 600, 800, 1000, 1500 gms.



NTI 1038

Plumbob - Conical/Pyramid Type

Chrome or Powder Coated with Thread
Weight : 400, 450, 500 gms



NTI 1040

Plumbob - Cylindrical Type

Golden or Silver Chrome
Weight : 400 gms

NEOTEK™

We Deliver trust and integrity



NTI 1041

Plumbob - Conical/Pyramid Type

Powder Coated with Plastic Head

Weight : 400 gms



NTI 1042

Plumbob - Conical Type

Chrome or Powder Coated with Thread

Weight : 400, 500 800 gms



NTI 1043

Plumbob - Long Conical

Golden or Silver Chrome

Weight : 200, 250, 300, 400, 500, 800, 1000 gms



NTI 1044

Plumbob - Conical Type

Powder Coated

Weight : 200, 400, 500 800 gms



NTI 1045

Masonry trowel

Wooden / Plastic Handle Sizes 4,5,6,7,8,10,12



NTI 1046

Allen Key (CrV / Carbon Steel)

Black Finish, Chamfered Edges, Sizes : 1/2/3/4/5/6/7/8/10/11/12/13/14/16 mm



NTI 1047

Mini G Clamp (Set of 3 Pcs.) / G Clamp

Cast Iron Frame / Drop Forged, Powder Coated,
Sizes : 25, 50, 75 mm / 2", 3", 4", 6", 8" 10"



NTI 1048

All Steel Bench Vice / Baby Vice (Fixed / Swivel Base)

Selected Steel Body, Hardened & Knurled Replaceable High Carbon Steel Jaws, Powder Coated, Sizes : 80 / 100 / 125 / 150 / 200 mm 40/50/60/70mm



NTI 1049

Glue Paint Mixer

10mm Hexagonal Rod with Hanger
Chrome Plated, Size : 600 x 120 mm



NTI 1050

Glue Paint Mixer

10mm Hexagonal Rod with Hanger
Chrome Plated, Size : 570 x 130 mm



NTI 1051

Glue Paint Mixer

14mm Round Rod with Welded Nut
Chrome Plated, Size : 600 x 140 mm



NTI 1052

Glue Paint Mixer

14mm Hexagonal Rod with Hanger
Galvanised, Size : 600 x 110 mm



NTI 1053

Glue Paint Mixer (Propeller Shape)

8mm Hexagonal Rod with Hanger
Galvanised, Size : 240 x 80 mm



NTI 1054

Glue Paint Mixer (Propeller Shape)

10mm Hexagonal Rod with Hanger
Powder Coated, Size : 600 x 100 mm



NTI 1055

Glue Paint Mixer (with High Resistance Blade)

10mm Hexagonal Rod with Hanger
Chrome Plated, Size : 600 x 110 mm



NTI 1056

Glue Paint Mixer (with High Resistance Blade)

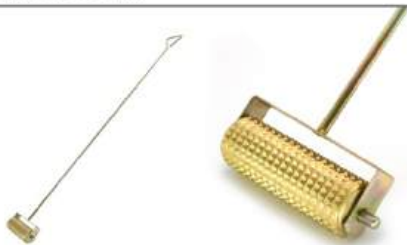
14mm Round Rod with Welded Nut
Galvanised / Chrome Plated, Size : 600 x 100 mm



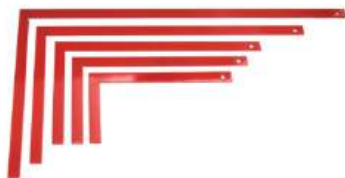
NTI 1057
Painter's Scraper
Powder Coated
Size : 170 x 120 mm



NTI 1059
Floor Scraper
Spring Steel Blade
Black, Size : 500 mm



NTI 1061
Brass Toothed Roller
With Galvanised Shank, Size : 1800 mm



NTI 1063
Mason's Angle Square
Powder Coated, Size : 30 x 5 x 300 mm / 400 mm / 500 mm /
600 mm / 700 mm / 800 mm / 1000 mm (Also available in 6mm)



NTI 1058
Painter's Scraper
Spring Steel Blade
Galvanised, Sizes : 100, 150, 200 mm



NTI 1060
Painter's Scraper
With Conical Socket & Spring Steel Blade
Powder Coated, Sizes : 150, 200, 300 mm



NTI 1062
Steel Hammer / Pincer Holder
Galvanised / Powder Coated



NTI 1064
Cast Iron Pulley
With Hook
Size : 100 / 125 / 145 / 165 / 195 mm



NTI 1065

Cast Iron Bench Vice (Fixed / Swivel Base)

Selected Steel Body, Hardened & Knurled Replaceable High Carbon Steel Jaws, Powder Coated, Sizes : 80 / 100 / 125 / 150 / 200 mm



NTI 1066

Cylindrical Bench Vice

Selected Steel Body, Hardened & Knurled Replaceable High Carbon Steel Jaws, Powder Coated, Sizes : 100 / 125 / 150 mm



NTI 1067

Pipe Vice - Self Locking

Selected Steel Body, Sizes : 1.1/2", 2", 3", 4"



NTI 1068

Anvil

Selected Steel Body, Sizes : 5Kgs. to 150Kgs.



NTI 1069

Figure & Number Punch Set / Dotted

Black Finish / Chrome Plated, Sizes : 2 / 3 / 4 / 6 / 8 / 10 / 12 mm



NTI 1070

Hacksaw Frame

With Wooden Handle
Size : 5 x 300 mm



NTI 1071

Junior Hacksaw Frame

With Plastic Handle
Size : 6"



NTI 1072

Junior Hacksaw Frame

With Steel Handle, Chrome Plated
Size : 6"



NTI 1073

Block Plane

With Plastic / Wooden Handle

Sizes : No. 102 / No. 110



NTI 1074

Jack Plane

With Brass Accessories, Plastic / Wooden Handle, Smooth Base

Sizes : No. 3 / No. 4 / No. 5 / No. 6



NTI 1075

Geodetic Pole (Fixed & Folding)

Size : 1600 mm



NTI 1077

Grease Gun - Lever Type

With Fixed & Flexible Spout, Sizes : 10 Oz. , 15 Oz.



NTI 1076

Grease Gun - Push Type

With Conical Spout, Sizes : 4 Oz. , 8 Oz.



NTI 1078

Oil Can - Peretto Type

Fixed & Flexible Spout, Brass Pump Mechanism / Steel Pump

Sizes : 200CC, 300CC, 400CC, 500CC



NTI 1079

Silicon Sealant Caulking Gun 9 inches

Plastic

9 Inches



NTI 1080

Carpenter F Clamp - Italian Model

35 x 6mm Section, Sizes : 150 x 25 x 6 mm, 200 x 25 x 6 mm, 250 x 25 x 6 mm, 300 x 25 x 6 mm, 350 x 30 x 6 mm, 400 x 30 x 6 mm, 500 x 35 x 6 mm, 600 x 35 x 7 mm, 700 x 35 x 7 mm, 800 x 40 x 8 mm, 900 x 40 x 8 mm, 1000 x 40 x 8 mm, 1200 x 40 x 8 mm

NEOTEK™

We Deliver trust and integrity



NTI 1081

Carpenter F Clamp - Universal Knurled Model

Sizes : 150 x 25 x 6 mm, 200 x 25 x 6 mm,
250 x 25 x 6 mm, 300 x 25 x 6 mm, 350 x 30 x 6 mm,
400 x 30 x 6 mm, 500 x 35 x 6 mm, 600 x 35 x 7 mm,
700 x 35 x 7 mm, 800 x 40 x 8 mm, 900 x 40 x 8 mm,
1000 x 40 x 8 mm, 1200 x 40 x 8 mm



NTI 1083

Leather Tool Pouch - Professional Quality

Double Pocket, Leather Tape Holder, Adjustable Nylon Belt
with Plastic Buckle



NTI 1085

Leather Tool Bag - Professional Quality

3 Pockets, 1 Leather Holder, 2 Pencil Loops, Card Packing



NTI 1087

Carpenter Nail Bag

2 Fixed Main Pockets, With Belt & Quick Release Buckle



NTI 1082

Metal Bar for Fence

Sizes & Model as per customer specifications



NTI 1084

Leather Tool Bag / Pocket Nail Bag - Pro Quality

4 Pockets, Metal Hammer Holder, With Belt Slot



NTI 1086

Carpenter Nail Bag

2 Large Main Pockets, With Belt & Quick Release Buckle



NTI 1088

Leather Tool Pouch

1 Large Big Pocket, 1 Front Stitched Pocket, With Belt &
Quick Release Buckle



NTI 1089

Leather Tool Pouch

1 Large, 1 Medium & 3 Small Pockets, With Leather Hammer Loop, Fully Adjustable Belt & Quick Release Buckle



NTI 1090

Leather Tool Pouch

1 Large, 1 Medium & 3 Small Pockets, With Leather Loop, Fully Adjustable Belt & Quick Release Buckle



NTI 1091

Leather Tool Pouch - DIY

1 Large, 1 Medium & 6 Small Pockets, With 2 Leather Hammer Loops, With Belt & Buckle



NTI 1092

Leather Tool Bag

2 Large, 2 Front Stitched & 6 Small Pockets, With 2 Leather Hammer Loops, With Belt & Buckle



NTI 1093

Leather Tool Bag

2 Large, 2 Front Medium & 6 Small Pockets, With 2 Leather Hammer Loops, Metal Tape Holder, Combination Square Holder, With Fully Adjustable Belt



NTI 1094

Leather Hammer / Pincer Holder

Fixed / Revolving



NTI 1095

Nylon Tool Bag

Double Pocket with 9 various Pockets, With Hammer Hook & Adjustable Belt



NTI 1096

Nylon Tool Bag - Big

Various Pockets, Steel Rod, Rubber Grip With Adjustable Belt

NEOTEK™

We Deliver trust and integrity

NEOTEK™



NTI 1097

Leather Tool Belt

With Steel Buckle, Card Packing, Sizes : 3 x 120 cm.,
3.5 x 120 cm



NTI 1099

Sledge Hammer Head

Selected Carbon Steel, Powder Coated, Sizes : 1 / 1.5 / 2 /
4 / 6 / 8 / 10 / 12 Lbs. & 1000 / 1500 / 2000 / 2500 / 3000 /
4000 / 5000 / 6000 / 8000 / 10000 gms.



NTI 1101

Brick Layer Cutter / Pick Hammer

Pointed & Flat, Hardened Edges, Powder Coated,
Sizes : 300 / 400 / 500 / 600 gms.



NTI 1103

Pick Axe

Forged Steel, Round & Oval Eye
Sizes : 1.5 / 1.8 / 2 / 2.5 kgs.



NTI 1098

Club Hammer Head

Selected Carbon Steel, Powder Coated, Sizes : 1000 / 2000 /
3000 / 5000 / 6000 / 8000 / 10000 gms.



NTI 1100

Claw Hammer - Steel Shaft

With Rubber Grip, Hardened & Tempered, Selected Steel
Sizes : 1/2 Lbs., 1 Lbs.



NTI 1102

Cutter / Pick Mattock

Pointed & Flat, Hardened Edges, Powder Coated,
Sizes : 4.5 Lbs. / 5 Lbs. / 7 Lbs.



NTI 1104

Hoe

Forged Steel Square Eye/ Round Eye
Sizes : 600 / 800 / 1000 / 1500 / 2000 gms.



NEOTEK INDUSTRIES

NTI 1105

Garden Bow Rake

Powder Coated, Sizes : 10 / 12 / 14 / 16 Teeth



NTI 1107

Garden Rake

Selected Forged Steel, Hardened & Tempered, Welded Socket, Powder Coated, Sizes : 14 / 16 Teeth



NTI 1109

Garden Hoe

Selected Forged Steel, Heart Shaped, Powder Coated, Sizes : 600 / 700 gms.



NTI 1111

Digging Fork

With Metal Plastic Coated Rollable Handle & Grip
Size : 280 x 180 mm



NTI 1106

Garden Rake

Selected Forged Steel, Hardened & Tempered, Single Piece, Powder Coated, Sizes : 14 / 16 Teeth



NTI 1108

Leveller Rake

With Steel Handle & Rubber Grip, Size : 300 x 4"



NTI 1110

Garden Hoe

Selected Forged Steel, 2 Prongs, Powder Coated, Sizes : 600 / 700 gms..



NTI 1112

Shovel - Square Mouth

With Ashwood Handle & Metal Plastic Coated Rollable Handle & Grip, Size : 245 x 310 mm

NEOTEK™

We Deliver trust and integrity



NTI 1113

Shovel - Round

With Ashwood Handle & Metal Plastic Coated Rollable Handle & Grip, Size : 235 x 300 mm



NTI 1114

Trench Spade

With Metal Plastic Coated Rollable Handle & Grip, Size : 120 x 445 mm

Product Packaging

We offer different packaging options, customisable as per your requirement.





NTI 1115

Double Coupler Drop Forged

Loadbearing coupler incorporative captive "T" bolts used to connecting two scaffold tubes at right angles. Galvanized, App. Weight: 1000 gms.



NTI 1117

Swivel Coupler Drop Forged

A one - piece loadbearing coupler of rugged design incorporating captive "T" bolts for connecting two scaffold tubes at any angle. Galvanized



NTI 1119

Drop Forged Putlog Coupler

A one - piece coupler for connecting transoms and Putlog to ledgers. Galvanized, App. Weight 550 gms.



NTI 1121

Board Retaining Coupler

A simple and very effective method of holding down scaffold boards to avoid lifting by unauthorized personal or the wind. Galvanized



NTI 1116

Double Coupler Pressed

Used to connect two scaffolding tubes at right angles. These are critical components in the scaffolding structure and must be load bearing to resist both slip and distortion. Zinc Plated, App. Weight: 550 gms.



NTI 1118

Swivel Coupler Pressed

Used to connect two scaffolding tubes at any angle. These are key components in the structure and must be load bearing. Zinc Plated, App. Weight: 550 gms.



NTI 1120

Put lock Coupler Pressed

A one - piece coupler for connecting transoms and Putlog to ledgers. Zinc Plated, App. Weight: 550 gms.



NTI 1122

Gravel Lock Gider Coupler

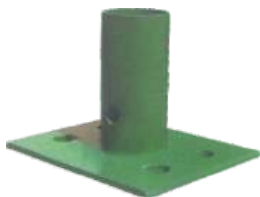
Designed to clamp on girders with a half coupler attached for the fixing of standard scaffold tube.



NTI 1123

Steel Waller Clamp - K6

Walling Clamp used to connect timber studs to soldiers



NTI 1125

Base Adapter

120 mm x 120 mm steel plate providing a full bearing surface for load distribution from vertical.



NTI 1127

Sleeve Coupler Pressed

For fixing two tubes end to end, recommended for all horizontal : of two tubes can



NTI 1129

Universal Clamp

These devices are used for soldier wall shuttering system; the universal clamp is used to fasten the aluminium studs to the soldiers



NTI 1124

Base Plate

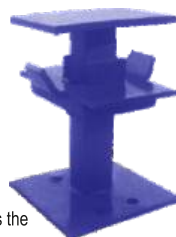
120 mm x 120 mm x 4 mm Steel Plate
Providing a full bearing surface for load distribution from vertical



NTI 1126

Drop Head Wedge Blade

Drop Forged



NTI 1128

Drop Head

The most important part of the shuttering is the drop head. The drop heads allow the beams, infills and panels to be lowered at a hammer stroke. App. Weight: 4560 Kg.



NTI 1130

Adj. Fork Head

120 mm x 120 mm x 6 mm plate



NTI 1131

Bottom Cup

Material: Cold Rolled Tested Low

Carbon Mild Steel Plate

Thickness: 5 mm

Finish: Self Color



NTI 1133

Top Cup

Material: Malleable cast iron/Drop Forged

grade B-3512, Ultimate Tensile strength

of base metal: 35Kgs/mm², Type: 3 lug

Weight per 100 Pcs: 3 lug - 4.4 Kgs

Finish: Self Color



NTI 1135

Waller Clamp

Walling Clamp used to connect timber studs to soldiers. Painted zinc Plated



NTI 1137

Props Sleeve Nut - LD

L - 230 mm, thk 3.8 mm, HD Nut & Roll threaded Sleeve



NTI 1132

Universal Jack

Universal Jack allows differences in height to be maintained



NTI 1134

Ledger Blade

Material: Drop Forged Graded Low

Carbon Mild Steel Round

Weight per 100 Pcs: 2.20 Kgs

Finish: Self Color



NTI 1136

Jack nut HD

Galvanized - Drop Forged



NTI 1138

Props Sleeve with Nut HD

L-230 mm, Thk - 3.8 mm HD Nut & Roll Threaded Sleeve



NTI 1139

Rapid Clamp

It provides cheap and effective clamping system that has no nuts or bolts and leaves no expensive ties in the concrete



NTI 1140

Tie Plate

A simply heavy duty zinc plated

Available thickness: 5 mm, 6 mm, 8 mm



NTI 1141

Props Sleeve Nut - HD

L - 230 mm, thk 3.D mm, LD Nut & Roll threaded Sleeve



NTI 1142

Flower Plate

A simply heavy duty self finish

120x120x5 mm. 120x120x6 mm



NTI 1143

Wing Nut

Cast nut with lever arm action used counter plate for all soldiers or waling applications. Zinc Plated



NTI 1144

Props Sleeve with Nut LD

L-230 mm, Thk - 3 mm LD Nut & Roll Threaded Sleeve



NTI 1145

Tie Rod

6 mtr Length, 16 mm Thl H



NTI 1146

Cover Blocks & Other Related Products

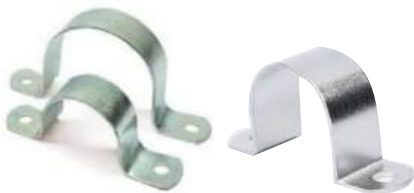
PVC Cover Blocks, HDPE Cover Blocks and More
All Sizes Available



NTI 1147

Axe

All Sizes Available (Weight)



NTI 1149

GI / MS Saddle Clamp

All Sizes Available



NTI 1151

Bar Type Hinges

Various Designs & All Sizes Available



NTI 1153

Grooved Wheel Heavy Duty Track Wheel MS / SS

All Sizes Available



NTI 1148

GI Pipe Fittings

All Sizes Available



NTI 1150

Brass Nipple / Brass Connector / Brass Fittings

All Sizes Available



NTI 1152

Bracket / Flat / L Shaped / Corner Bracket

All Sizes Available



Vise Grip Plier

Sizes : 5, 7 & 10 Inches

Wire Stripper

With Colour Option

NEOTEK™

We Deliver trust and integrity

INDUSTRIAL SAFETY SHOES

Quality with Comfort



SHA- 1051

UPPER : GENUINE LEATHER

SOLE : PVC & PU SOLE

TOE : STEEL TOE

MID PLATE : STEEL MID PLATE

COLOUR : BLACK (OTHER COLOUR ON DEMAND)

AVAILABLE SIZES : 39 - 46 | UK 5 - 12

DESIGN : HIGH & LOW ANKLE



TOE PROTECTION



PUNCTURE RESISTANT



SLIP RESISTANT



EXTRA GRIPPING



NEOTEK™

We Deliver trust and integrity

INDUSTRIAL SAFETY SHOES

Quality with Comfort



SHA- 1051

UPPER : GENUINE LEATHER

SOLE : PVC & PU SOLE

TOE : STEEL TOE

MID PLATE : STEEL MID PLATE

COLOUR : BLACK (OTHER COLOUR ON DEMAND)

AVAILABLE SIZES : 39 - 46 | UK 5 - 12

DESIGN : HIGH & LOW ANKLE



TOE PROTECTION



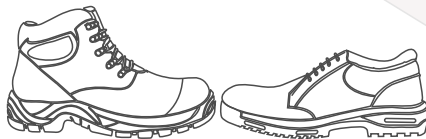
PUNCTURE RESISTANT



SLIP RESISTANT



EXTRA GRIPPING





NEOTEK™

We Deliver trust and integrity



ISO
9001:2015
14001:2015
Certified
Company

NEOTEK™ INDIA

We Deliver trust and integrity

N-89, A.F. Enc-I, Okhla,
New Delhi-110025 INDIA

www.neotekindia.com

+91-906 906 9090

Plot No. 75, Udyog Vihar Extension,
Near LG Factory, Ecotech-II,
Greater Noida, UP- 201306 INDIA

12, Shiv Nagar, Near Railway Lines,
Jalandhar, Punjab-144021 INDIA



Scan for WhatsApp



Scan for Website

